

Company Name: _____

Phone: _____ Client: _____

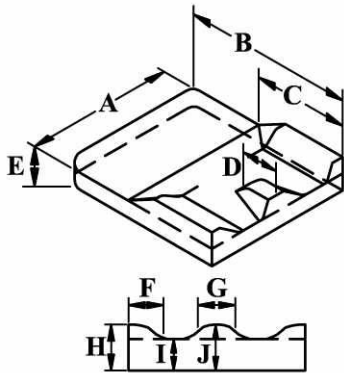
QUOTE ORDER PO# _____

Note: Selections must be made in Step 1,2,3,5 & 6. check all options clearly, if selections are not made in required fields then standard/default options will be selected. *Include wood and all foam layers with seat thickness.

Step 1 Seat Style Please select (One) below.

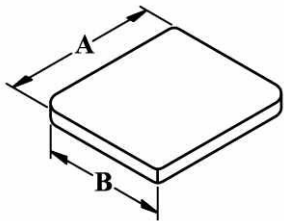
Custom Contoured Seat #13003-SA \$540.00
with mounting hardware (E2609)

- A- _____
- B- _____
- C- _____
- D- _____
- *E- _____
- F- _____
- G- _____
- H- _____
- I- _____
- J- _____



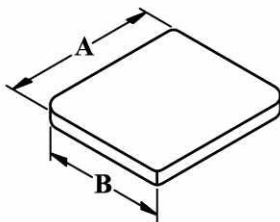
Custom Configured Seat #13003-02 \$455.00
with mounting hardware (E2609)
choose all options / upgrades separate

- A- _____
- B- _____



Seat Planar Pediatric #13002-PE \$384.00
any size up to 15" x 15", with mounting hardware (E2292)
choose all options / upgrades separate

- A- _____
- B- _____



Office Use Only:

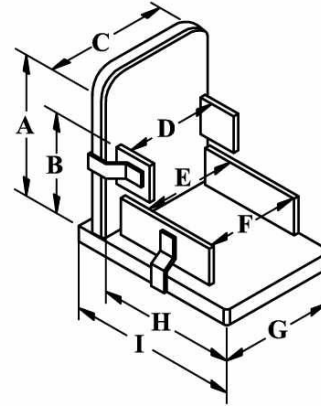
W/C Make: _____ W/C Model: _____

W/C Width: _____ Seat Rail Tubing

W/C Depth: _____ 7/8" Tubing Size

1" Tubing Size

- A- _____
- B- _____
- C- _____
- D- _____
- E- _____
- F- _____
- G- _____
- H- _____
- I- _____



Step 2 Seat-Mount Information

- On-Top of Seat Rails "Full width Seat" (standard)
- 1 Between Seat Rails -- Seat width will be 3" narrower than chair width
- Cushion "Separated From Wood" #13007-22 \$128.00
- Mounting Location Flush Mount 1" Drop 2" Drop 3" Drop
- 2 Oversized Seat Upgrade #13007-05 \$67.00
- T-Nut for Attachment (standard)
- 3 Track Mount Hardware #13010-TM2 \$52.00
- Omit T-Nuts (\$6.00)
- Omit Wood (\$6.00)

Step 3 Mounting Hardware-Options

- Omit Mounting Hardware (\$35.00)
- Zero Inch U-Clamp Drop Kit #2199-99 (standard)
- Velcro Hook & Loop Attachment #13009-PM \$16.75
- 1" U-Clamp Drop Kit #2200-99 \$17.00
- 1" Drop Hook Kit #2211-99 \$17.00
- 2" Drop Hook Kit #2213-99 \$17.00
- 3" Drop Hook Kit #2215-99 \$17.00
- J & L Adjustable Mounting Kit #2300-99 \$45.00
- select J and L size below
- 2-Hole "J"s 7-Hole "J"s 1-Hole "L"s 5-Hole "L"s
- 4-Hole "J"s 9-Hole "J"s 2-Hole "L"s 7-Hole "L"s
- 3-Hole "L"s 9-Hole "L"s
- 4-Point Knob Release Mount Kit #13010-19 \$566.00
- 4 2-Point Knob Release Mount Kit #13007-15 \$273.00

Phone 800.676.5030
Fax 330.545.6389
www.icrehab.com

Accu-Fit Seating™

Seat Cushion Measurement Guide

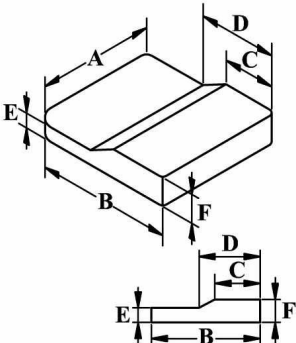
Step 4

Additional Seat Options

(choose multiple options)

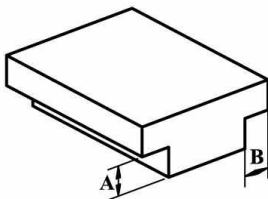
Anti-Thrust upgrade #13003-AT \$67.00

A- _____
 B- _____
 C- _____
 D- _____
 E- _____
 F- _____



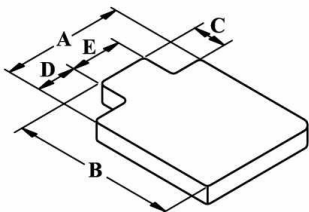
Seat-Rail cut-outs (full-width drop-in style seats) #13007-15 \$40.00

A- _____
 B- _____



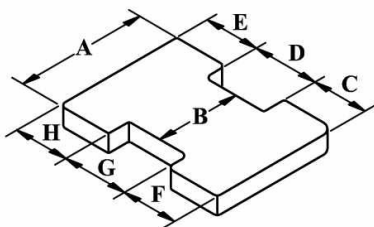
Notched Seat upgrade #13007-10 \$40.00

A- _____
 B- _____
 C- _____
 D- _____
 E- _____



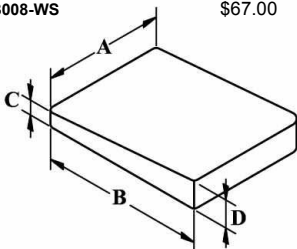
3 I-Cut Seat (for x-brace and hardware clearance) #13007-13 \$40.00

A- _____
 B- _____
 C- _____
 D- _____
 E- _____
 F- _____
 G- _____
 H- _____



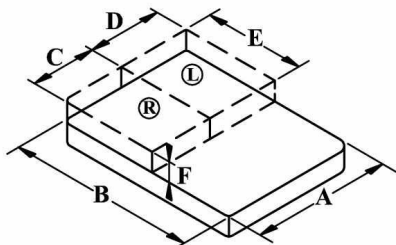
Wedge upgrade #13008-WS \$67.00

A- _____
 B- _____
 C- _____
 D- _____



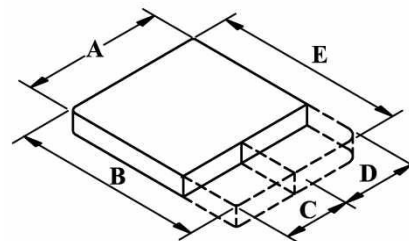
Pelvic Obliquity upgrade #13005-OB \$38.00

A- _____
 B- _____
 C- _____
 D- _____
 E- _____
 F- _____



Leg-length discrepancy (right or left) #13005-LLD \$67.00

A- _____
 B- _____
 C- _____
 D- _____
 E- _____



Step 5

Foam Options & Upgrades

(Base-Layer Foam)

Etha-Foam (high density)

- 1/2" Etha-Foam (standard) (3.00)
- Omit 1/2" Etha-Foam (3.00)
- 1" Etha-Foam #13030-02 \$24.75
- 1.5" Etha-Foam #13030-03 \$37.00

Neoprene Foam

- 1/2" Neoprene Foam #13030-04 \$27.00

Poly Foams

- 1/2" Soft Polyurethane Foam #13030-05 \$7.61
- 1/2" Medium Polyurethane Foam #13030-07 \$15.23
- 1" Soft Polyurethane Foam #13030-06 \$15.23
- 1" Medium Polyurethane Foam #13030-08 \$22.84

Visco Elastic

- 1/2" Super Soft Visco Elastic Foam #13030-09 \$37.00
- 1/2" Soft Visco Elastic Foam #13030-11 \$37.00
- 1" Super Soft Visco Elastic Foam #13030-10 \$73.00
- 1" Soft Visco Elastic Foam #13030-12 \$73.00

SunMate Brand Foam

- 1/2" Soft SunMate Foam #13030-13 \$49.00
- 1/2" Medium SunMate Foam #13030-15 \$49.00
- 1" Soft SunMate Foam #13030-14 \$97.00
- 1" Medium SunMate Foam #13030-16 \$97.00

(Mid-Layer Foam)

Poly Foams

- 1/4" Soft Polyurethane Foam #13040-01 \$4.57
- 1/2" Soft Polyurethane Foam #13040-02 \$7.61
- 1/2" Medium Polyurethane Foam #13040-04 \$15.23
- 1" Soft Polyurethane Foam #13040-03 \$15.23
- 1" Medium Polyurethane Foam #13040-05 \$22.84

Visco Elastic

- 1/2" Super Soft Visco Elastic Foam #13040-06 \$37.00
- 1/2" Soft Visco Elastic Foam #13040-08 \$37.00
- 1" Super Soft Visco Elastic Foam #13040-07 \$73.00
- 1" Soft Visco Elastic Foam #13040-10 \$73.00

SunMate Brand Foam

- 1/2" Soft SunMate Foam #13040-11 \$49.00
- 1/2" Medium SunMate Foam #13040-13 \$49.00
- 1" Soft SunMate Foam #13040-12 \$97.00
- 1" Medium SunMate Foam #13040-14 \$97.00

Neoprene Foam

- 1/2" Neoprene Foam #13040-15 \$27.00

Accu-Fit Seating™ Seat Cushion Options Sheet

Step 5

Foam Options-Continued

(Top-Layer Foam)

Poly Foam

- 1/4" Soft Polyurethane Foam #13050-01 \$4.57
- 1/2" Soft Polyurethane Foam #13050-02 \$7.61
- 1/2" Medium Polyurethane Foam #13050-04 \$15.23
- 1" Soft Polyurethane Foam #13050-03 \$15.23
- 1" Medium Polyurethane Foam (standard)**

Visco Elastic

- 1/2" Super Soft Visco Elastic Foam #13050-06 \$37.00
- 1/2" Soft Visco Elastic Foam #13050-08 \$37.00
- 1" Super Soft Visco Elastic Foam #13050-07 \$73.00
- 1" Soft Visco Elastic Foam #13050-09 \$73.00

SunMate Brand Foam

- 1/2" Soft SunMate Foam #13050-10 \$49.00
- 1/2" Medium SunMate Foam #13050-12 \$49.00
- 1" Soft SunMate Foam #13050-11 \$97.00
- 1" Medium SunMate Foam #13050-13 \$97.00

Neoprene Foam

- 1/2" Neoprene Foam #13050-14 \$27.00

Akton Brand Polymer Gel

Overlay-full sheet

- 1/2" Poly-Gel (Cubed) #13050-16 \$320.00
- 1/2" Poly-Gel (Flat) #13050-15 \$320.00
- 1/2" Poly-Gel (Cubed) > 20" width or ht. #13050-18 \$402.00
- 1/2" Poly-Gel (Flat) > 20" width or ht. #13050-17 \$402.00

Inlay half-sheet

- 1/2" Poly-Gel Inlay (Cubed) #13050-20 \$122.00
 - Rear Middle Front
- 1/2" Poly-Gel Inlay (Flat) #13050-19 \$122.00
 - Rear Middle Front

VARILITE® Air-Foam Floatation Insert

- 2 3/4" Single Chamber Cushion #13060-V1 \$320.00
- 2 3/4" Dual Chamber Cushion #13060-V2 \$320.00

Seat options & upgrade notes:

Step 6

Upholstery Options & Upgrades

- Dartex fabric side (standard)**
- Incontinent Inner-Liner Cover #13008-IC \$122.00
- Dartex reversed (smooth side) no charge
- 5** Naugahyde / Vinyl (contact surface only) #Uph-01 \$25.00
- 5** Cordura fabric (contact surface only) #Uph-02 \$25.00
- Naugaform Vacuum Form Fitted #Uph-03 \$105.00
- 5** Daralex (contact surface only) #Uph-04 \$45.00
- 5** Rubatex (contact surface only) #Uph-05 \$45.00
- 5** Neoprene (contact surface only) #Uph-06 \$150.00
- Other (special): **Note:**

Step 7

Seat-Mount Hip Supports (E0956)

6 Base Type (Must Select Base Type / Sold In Pairs)

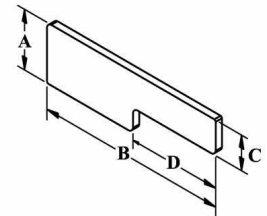
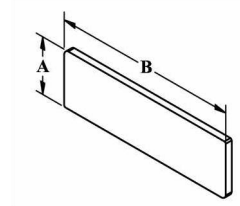
- (1/4" ABS) Base Support (1/2" Wood) Base Support

Bracket type & pad style/size (Must Choose One)

- Zero inch** offset brackets, 3x5" pads #11071-20 \$196.00
- Zero inch** offset brackets, 4x6" pads #11071-21 \$196.00
- Zero inch** offset brackets, 5x7" pads #11071-22 \$196.00
- Zero inch** offset, Rectangular pads #11070-50 (specify dimensions below) \$196.00
- Zero inch** offset, Contoured pads #11070-51 (specify dimensions below) \$214.00
- One inch** offset brackets, 3x5" pads #11071-30 \$196.00
- One inch** offset brackets, 4x6" pads #11071-31 \$196.00
- One inch** offset brackets, 5x7" pads #11071-32 \$196.00
- One inch** offset, Rectangular pads #11070-52 (specify dimensions below) \$196.00
- One inch** offset, Contoured pads #11070-53 (specify dimensions below) \$214.00
- Two inch** offset brackets, 3x5" pads #11071-40 \$196.00
- Two inch** offset brackets, 4x6" pads #11071-41 \$196.00
- Two inch** offset brackets, 5x7" pads #11071-42 \$196.00
- Two inch** offset, Rectangular pads #11070-54 (specify dimensions below) \$196.00
- Two inch** offset, Contoured pads #11070-55 (specify dimensions below) \$214.00



A-
B-
C-
D-



Hip-Pad Options / Upgrades

- 1/2" neoprene foam / dartex fabric side (standard)
- 1/2" neoprene foam / reversed dartex fabric side (no charge)
- Special foam or upholstery #0099 \$30.00 **Note:**

Step 8

Hanger-Mount Knee Adductors (E0956/E1028)
(Polymer-Gel pad(s) and hardware included)

Removable Knee Adductor (E0956/E1028)

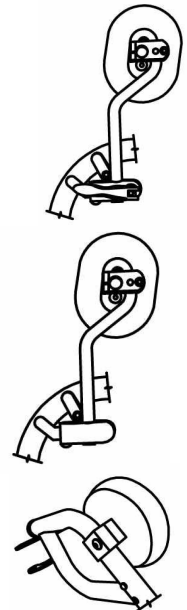
- (One) 7/8" Frame-Mount Bracket #11067-E \$329.00
- (Pair) 7/8" Frame-Mount Brackets #11067-2 \$658.00
- (One) 1" Frame-Mount Bracket #11068-E \$329.00
- (Pair) 1" Frame-Mount Brackets #11068-2 \$658.00

Fixed Knee Adductor (E0956)

- (One) 7/8" Frame-Mount Bracket #11064-E \$301.00
- (Pair) 7/8" Frame-Mount Brackets #11064-2 \$602.00
- (One) 1" Frame-Mount Bracket #11065-E \$301.00
- (Pair) 1" Frame-Mount Brackets #11065-2 \$602.00

"Knee Button" Style Adductors (E0956)

- (Pair) "Knee Button" Adductors Brackets #11066 \$145.00



Accu-Fit Seating™

Seat Cushion Options Sheet

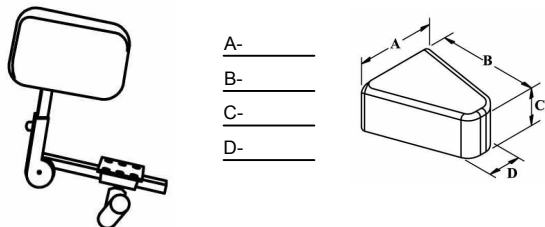
Step
9

Knee Abductor Supports

Flip-Down Knee Abductor (E0957 / E1028)

(Pad and hardware included)

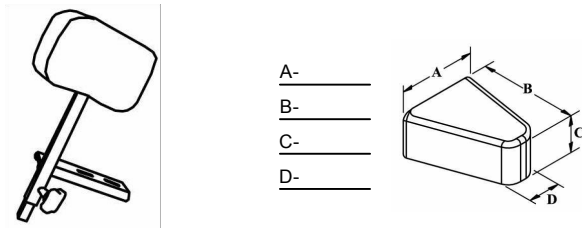
- Small Pad (A-3") (B-4") (C-3") (D-2.5") #11060-10 \$362.00
- Medium Pad (A-4") (B-5") (C-3") (D-3.5") #11060-11 \$362.00
- Large Pad (A-5") (B-6") (C-3") (D-4.5") #11060-12 \$362.00
- Custom Size Pad (specify dimensions below) #11060-15 \$410.00



Knee Abductor "Econo-Removable" (E0957 / E1028)

(Pad and hardware included)

- Small Pad (A-3") (B-4") (C-3") (D-2.5") #11059-10 \$259.00
- Medium Pad (A-4") (B-5") (C-3") (D-3.5") #11059-11 \$259.00
- Large Pad (A-5") (B-6") (C-3") (D-4.5") #11059-12 \$259.00
- Custom Size Pad (specify dimensions below) #11059-15 \$304.00



Abductor Pad / Options / Upgrades

- SunMate foam / dartex uph. (standard)
- SunMate foam / reversed dartex uph. (no charge)
- Special foam / upholstery #0099 \$30.00 **Note:**

Step
10

Positioning Seat Belts (E0978)

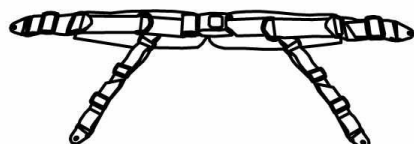
2-Point Seat Belts / Standard-Pull

- Pediatric 1" Pushbutton Seat Belt 42" Length #11024-16 \$64.00
- Youth 1 1/2" Pushbutton Seat Belt 60" Length #11027-04 \$76.00
- Adult 1 1/2" Pushbutton Seat Belt 80" Length #11027-06 \$76.00



4-Point Seat Belts / Standard-Pull

- Pediatric 1" Pushbutton Seat Belt 42" Length #11024-28 \$85.00
- Youth 1 1/2" Pushbutton Seat Belt 60" Length #11027-22 \$105.00
- Adult 1 1/2" Pushbutton Seat Belt 80" Length #11027-24 \$105.00



Step
11

Foot/Leg Support Options

"Calf/Leg Supports" One Piece (K0108)

- Solid Calf/Leg Support-Padded (One Piece) #11048-01 \$589.00 w/Attaching Hardware
- Calf Panel Strap, Hyper Cel® Dbl. velcro strap (specify size) \$70.00
 - 12-15" Frame 16-19" Frame 20-22" Frame
- Calf Panel Strap, Hyper Cel® Dbl. side-release strp. (specify size) \$70.00
 - 12-15" Frame 16-19" Frame 20-22" Frame

"Ankle Cuffs" Velcro-release (adj. mount) (E0951)

- Small "Ankle Cuffs" (pair) #110451-S \$156.00
- Medium "Ankle Cuffs" (pair) #110451-M \$156.00
- Large "Ankle Cuffs" (pair) #110451-L \$156.00

"Ankle Cuffs" Side-release (adj. mount) (E0951)

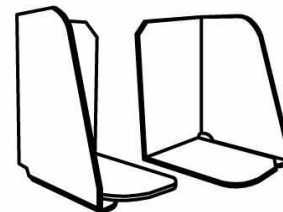
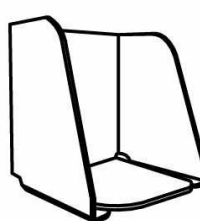
- Small "Ankle Cuffs" (pair) #110452-S \$156.00
- Medium "Ankle Cuffs" (pair) #110452-M \$156.00
- Large "Ankle Cuffs" (pair) #110452-L \$156.00

Toe / Ankle Straps Velcro-release (E0951)

- Child Toe / Ankle Straps (pair) #11004 \$30.46
- Youth Toe / Ankle Straps (pair) #11005 \$30.46
- Adult Toe / Ankle Straps (pair) #11006 \$30.46

Foot Buckets Padded / Mounting Hardware Included (K0108)

- Small 2-Piece 6 1/4" wide Foot buckets #11036-00 \$502.00
- Medium 2-Piece 7 1/4" wide Foot buckets #11036-01 \$502.00
- Large 2-Piece 8 1/4" wide Foot buckets #11036-02 \$502.00
- Ex-Large 2-Piece 9 1/4" wide Foot buckets #11036-03 \$502.00
- One-Piece 12 1/2" wide Foot bucket #11037-00 \$502.00
- One-Piece 14 1/2" wide Foot buckets #11037-01 \$502.00



Footnotes:

- 1 Seat mount hip supports not available. Additional upgrades may be necessary when choosing this option.
- 2 Seat width or depth greater than 19".
- 3 Track Hardware not available with I-Cut Seats, Knob mount seat hardware, and seat mount hip support hardware.
- 4 Must select 2-Point Knob hardware package with Back support to receive seat-to-back brackets
- 5 Material on contact surface of cushion only. Standard Dartex on non-contact surfaces standard, may request other material options at no-charge.
- 6 Overall seat width will be reduced by 1/2" to accommodate brackets. Sold in pairs, must choose base type, bracket style and pad size.